

Cardigan

in Cable and Lace Pattern

Size 36/38 (40/42)

Instructions are given for first size. Figures in parenthesis refer to larger sizes. When only one figure is given, it applies to all sizes.

Materials: Approx. 10 (11) balls (approx. 90 m each) of Lana Grossa Cotofine (70% cotton, 30% polyamide) in light turquoise (col 23); size 8 mm needles, cable needle [cn], three 23 mm buttons in petrol blue [by Union Knopf, item 451000, col 32].

Selvage stitch: Knit on RS rows, purl on WS.

Stockinette stitch: k on RS; p on WS.

Cable/Lace Pattern A: Work according to chart A, working 55 sts between arrows. Numbers at right edge of chart indicate RS rows; on WS rows, work sts as they appear, purl all yo's. Repeat rows 1-6 throughout.

Cable/Lace Pattern B: Work according to chart B, working 31 sts between arrows.

Cable/Lace Pattern C: Work according to chart C, working 29 sts between arrows.

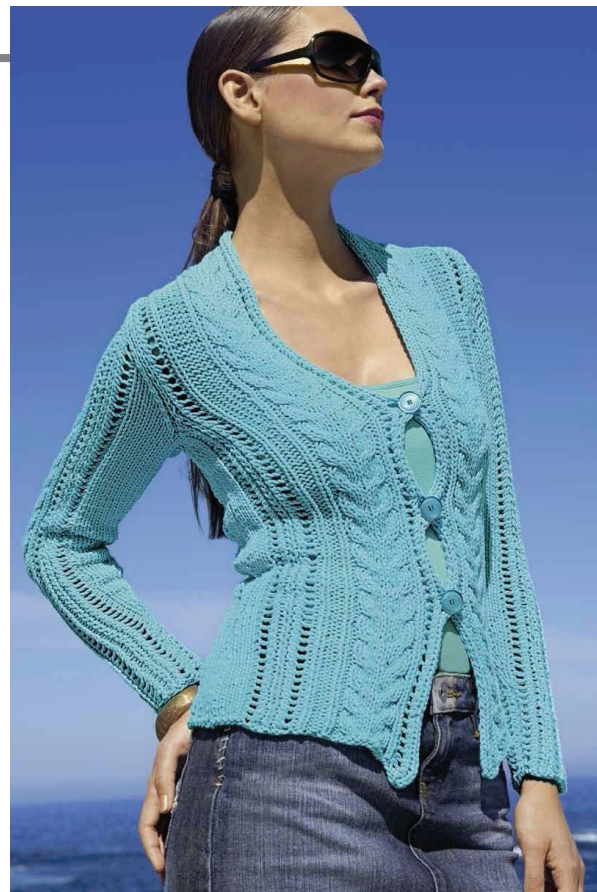
Full-fashion decrease A: At beginning of row, selvage st, k2tog; at end of row, work to last 3 sts, SKP [sl1 kwise, k1, pss0], selvage st. 1 st decreased at each edge.

Full-fashion decrease B: At beginning of row, selvage st, SKP; at end of row, work to last 3 sts, k2tog, selvage st. 1 st decreased at each edge.

Full-fashion increases: M1r, 1 st in from each edge.

Gauge: 18 sts and 23 rows = 10 cm in cable/lace pattern A, B and C; 14 sts and 20 rows = 10 cm in st st.

Back: Cast on 77 (83) sts. Knit one WS row, then position sts as following: selvage st, 10 (13) sts in stockinette st, 55 sts in cable/lace pattern A, 10 (13) sts in stockinette st, selvage st. Work in pattern as established and shape sides as following: working full-fashion decrease A, decrease 1 st at each edge on 18th row from cast-on, then every following 6th row twice – 71 (77) sts. Continue in pattern as established until back measures 14 cm from cast-on. Place waist markers at right and left edge. Working full-fashion increases, increase 1 st at each edge on 9th row from waist markers, then every following 16th row once – 75 (81) sts. When back measures 22 cm from waist markers,



shape armholes: bind off 3 sts at beginning of next 2 rows. Working full-fashion decrease A, decrease 1 st at each edge every other row 4 times – 61 (67) sts. When armhole measures 17 (18) cm in depth, shape neck: work to center 17 sts, join another ball of yarn, bind off center 17 sts, work to end. Working both sides at same time, bind off 4 sts at each neck edge once and when back neck measures 2 cm in depth, bind off remaining 18 (21) sts for each shoulder.

Left Front: Cast on 42 (45) sts. Knit one WS row, then position sts as following: selvage st, 10 (13) sts in stockinette st, 31 sts in cable/lace pattern B. Work side shaping at right edge same as for back and when same length as back to armhole, shape armhole at right edge same as for back. At same time, when left front measures 35 (36) cm from cast-on, shape front edge: work to last 20 sts = last knit st before cable, increase [M1] 1 st. Repeat increase row every 4th row twice. Purl increased sts on RS rows, knit on WS rows. After all increases for front edge shaping and all decreases for armhole shaping have been worked, you will have 37 (40) sts on the needle. When armhole measures 19 (20) cm in depth, bind off 18 (21) shoulder sts at right edge – 19 sts remain. Work in pattern as established on these 19 sts for 8 cm, then bind off all sts.

Right Front: Work same as for left front, reversing

all shaping and working increases at front edge as following: work to 3 sts after cable, which is a knit st, M1l, work to end. At same time, when right front measures 15 (16) cm from cast-on, work first buttonhole: k2tog first 2 sts, yo, work to end. Work remaining 2 buttonholes in same way, spaced 10 cm apart.

Sleeves: Cast on 33 (37) sts. Knit one WS row, then position sts as following: selvage st, 1 (3) sts in stockinette st, 29 sts in cable/lace pattern C, 1 (3) sts in stockinette st, selvage st. Work in pattern as established and shape sleeve as following: working full-fashion increases, increase 1 st at each edge 10 cm from cast-on, then ev-

ery following 8th row 8 times – 51 (55) sts. When sleeve measures 35 cm from first increase, shape sleeve cap: bind off 3 sts at beginning of next 2 rows and 2 sts at beginning of next 2 rows. Working full-fashion decrease B, decrease 1 st at each edge every other row 12 times, then bind off 2 sts at beginning of next 2 rows, then bind off remaining 13 (17) sts.

Finishing: Pin pieces to measurements and block with damp towels. Sew all seams. Sew in sleeves. Sew right and left front band together at center of back neck so that seam is on WS, then sew side edges of front bands to back neck edge. Sew buttons.

Charts A, B and C:

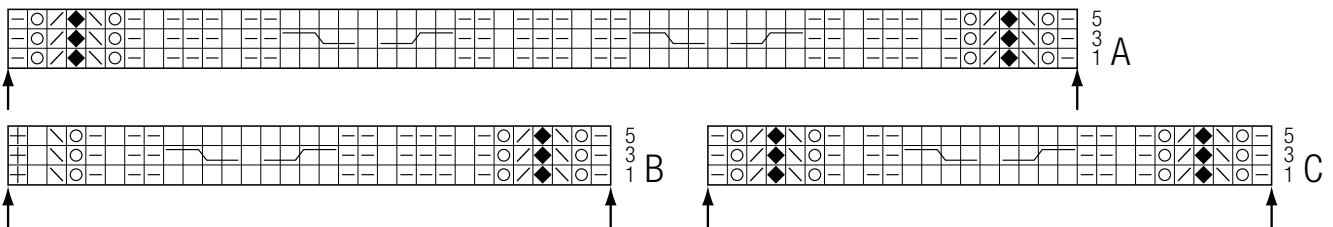




Chart Key:

- ⊞ = selvage st
 - = k1
 - ▢ = p1
 - ⊙ = yo
 - ⊠ = k2tog
 - ⊡ = SKP [sl1 kwise, k1, pss0]
 - ⬢ = ktbl
-  = sl2 to cn and hold in front of work, k2, k2 from cn
 = sl2 to cn and hold in back of work, k2, k2 from cn

