

Wrap Cardigan

Size 38/40 (42/44)

Instructions are given for first size. Figures in parenthesis refer to larger sizes. When only one figure is given, it applies to all sizes.

Materials: Approx. 7 (8) balls (approx. 160 m each) of Lana Grossa Puntino (100% mercerized cotton) in emerald (col 49); size 3.5 mm and 4 mm needles, size 3 mm crochet hook.

Slip Stitch Edge: RS: * k1, slip 1 purlwise with yarn in front [wyif], repeat from *, end k1. WS: * slip 1 purlwise wyif, k1, repeat from *, end slip 1 purlwise wyif.

Note: work slip stitch edge along left and right front edges.

Rib Pattern: k1, p1.

Stockinette stitch: k on RS; p on WS.

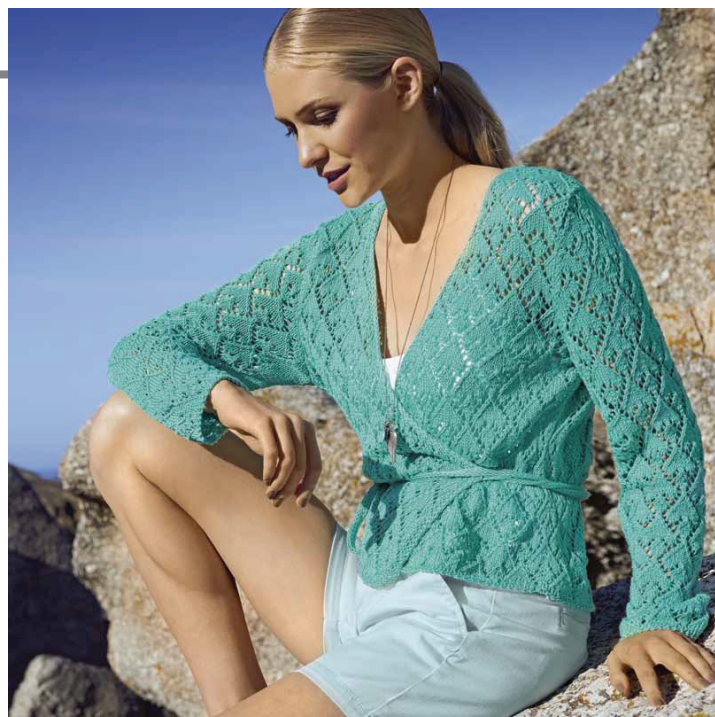
Lace Pattern A: Work according to chart A. Numbers at right edge of chart indicate RS rows; on WS rows, work purl all sts and yarn overs [yo's]. Begin chart pattern with sts before first arrow, work 12 sts between arrows for pattern repeat, end with 12 sts after 2nd arrow. Repeat rows 1-20 throughout.

Lace Pattern B: Work same as for lace pattern A, following chart B.

Gauge: 23 sts and 33.5 rows = 10 cm in lace pattern A and B on larger needles.

Back: With smaller needles, cast on 123 (135) sts. Working first st after selvage st as k1 and last st before selvage st as k1, work in rib pattern for 4 rows = 1 cm. Change to larger needles and work in lace pattern A according to chart A for 31 (32) cm. **Shape armholes:** Bind off 4 sts at beginning of next 2 rows, 3 sts at beginning of next 2 rows, 2 sts at beginning of next 2 rows and 1 st at beginning of next 10 rows = 95 (107) sts. Continue in pattern until armhole measures 20 (21) cm. Bind off all sts.

Left Front: With smaller needles, cast on 70 (77) sts and position sts as following: selvage st, 66 (73) sts in rib pattern [begin with k1 (p1)], work 3 slip st edge sts as instructed. Work in pattern as established for 4 rows = 1 cm. Change to larger needles and position sts as following: For smaller size, work 7 sts before first arrow of lace pattern A, work 12-st pattern repeat between arrows 5 times = 60 sts, work 3 slip st edge sts. For larger size, work 7 sts before first arrow of lace pattern A,



work 12-st pattern repeat between arrows 5 times = 60 sts, work 7 sts after 2nd arrow, work 3 slip st edge sts. Work in pattern as established.

When left front measures same length as back to armhole, **shape armhole** at right edge same as for back. **At same time**, when left front measures 15 (17) cm from rib pattern, **shape front edge:** work to last 5 sts on a RS row, k2tog, work 3 slip st edge sts. Work decrease row every following RS row 8 times more, then every other RS row 24 times more. When left front measures same length as back to shoulder, bind off remaining 23 (30) shoulder sts.

Right Front: Work same as for left front, reversing all shaping and working decreases for front edge shaping as following: Work 3 slip st edge sts, SKP [sl1 kwise, k1, pss0], work in pattern to end.

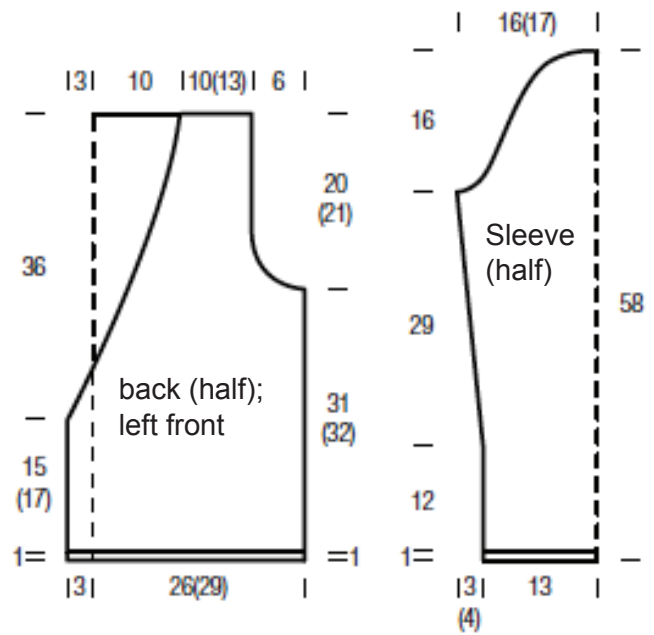
Sleeves: With smaller needles, cast on 63 sts. Working first st after selvage st as k1 and last st before selvage st as k1, work in rib pattern for 4 rows = 1 cm. Change to larger needles, work in lace pattern B according to chart B and shape sleeve as following: Increase 1 st at each edge when sleeve measures 12 cm from rib pattern, then every following 10th (8th) 8 (11) times more – 81 (87) sts. Work increased sts in Stockinette. Continue in pattern until sleeve measures 29 cm from first increase row.

Shape sleeve cap: bind off 4 sts at beginning of next 2 rows, 3 sts at beginning of next 2 rows, 2 sts at beginning of next 2 rows and 1 st at beginning of next 8 rows. * Work 2 rows even. Bind off 1 st at beginning of following 2 rows. Repeat from

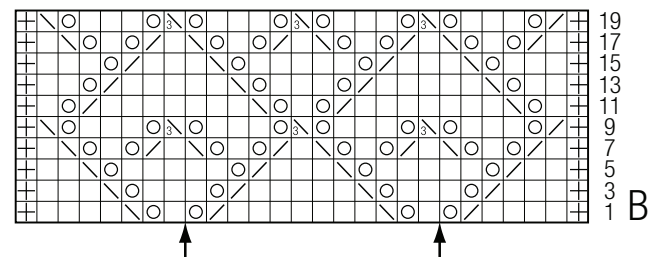
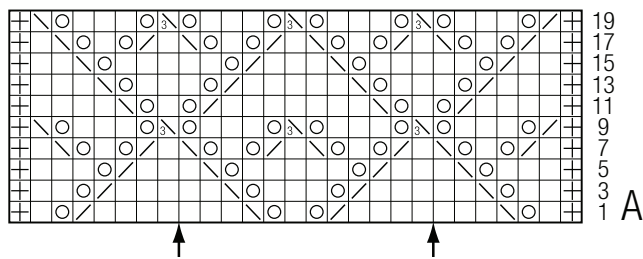
* 10 times, then bind off 1 st at beginning of next 12 rows, 2 sts at beginning of next 2 rows and 3 sts at beginning of next 2 rows. Bind off remaining 21 (27) sts.

Finishing: Pin pieces to measurements and block with damp towels. Sew all seams. Sew in sleeves. With crochet hook, work 1 row slip st along back neck edge.

Tie: with larger needles, cast on 7 sts and work slip st edge sts until tie measures 110 (120) cm. Bind off all sts. Work 2nd tie same as first tie until 2nd tie measures 65 (75) cm. Bind off all sts. Sew longer tie to left front edge at beginning of front edge shaping. Sew shorter tie to right front edge at beginning of front edge shaping. To close, thread longer tie through yo's at waist height.



Charts A and B:



- Chart key:**
- ⊕ = selvage st
 - = k1
 - = yo
 - ▧ = k2tog
 - ▨ = SKP [sl1 kwise, k1, pss0]
 - ⊞ = SK2P [sl1 kwise, k2tog, pss0]