

Crocheted Lace Sweater

Size 36 – 40

Materials: Approx. 400 g of Lana Grossa Puntino (100% mercerized cotton; 160m/50g) in White (col 1); size 3 mm crochet hook.

Lace Pattern: Multiple of 18 + 3. Work back and forth in rows according to chart A. Numbers at right edge and left edge of chart indicate rows. At beginning of each row, work the number chains as shown on chart. Begin chart pattern with sts before first arrow, work sts between arrows for pattern repeat 5 times, end with sts after 2nd arrow. Work rows 1 to 17 once, then repeat rows 10 to 17 throughout.

Eyelet pattern: Multiple of 5 + 2. Work back and forth in rows according to chart B. Numbers at right edge and left edge of chart indicate rows. At beginning of each row, work the number of chains as shown on chart. Work 5 sts between arrows for pattern repeat, end with sts after 2nd arrow. Work rows 1 to 4 once, then repeat rows 3 and 4 throughout.

Gauge: 2 pattern repeats and 8 rows = 15 x 10 cm in lace pattern; 23 sts and 12 rows = 10 x 10 cm in eyelet pattern.

Back: Ch 108 + 3 t-ch and work in lace pattern according to chart A. Work first dc on first row in 5th ch from hook = 6 pattern repeats. When back measures 56.5 cm from beginning, place armhole markers at right and left edge. Continue until back measures 13.5 cm from markers.

Shape neck: Leave center 4 pattern repeats unworked and work each side separately [= 1 pattern repeat on each side] for 2.5 cm. Cut yarn and fasten off.

Front: Work same as for back until front measures 3.5 cm from markers.

Shape neck: Leave center 4 pattern repeats unworked and work each side separately [= 1 pattern repeat on each side] until front measures same length as back to shoulders. Cut yarn and fasten off.

Sleeves: Ch 55 + 2 t-ch and work in eyelet pattern according to chart B. Work first dc on first row in 3rd ch from hook = 11 pattern repeats. At same time, shape sleeve as following: Increase 1 st at



beginning and end of 5th row, then every following 6th row 9 times = 15 pattern repeats. Work increased sts into eyelet pattern. Continue until sleeve measures 54 cm from beginning. Cut yarn and fasten off.

Finishing: Pin pieces to measurements and block. Sew shoulder seams. Work edging around neck edge as following: Round 1: Work sc around. Round 2: * 1 sc, 1 picot of [ch 3, 1 sc in first ch], skip 1 sc; repeat from * around. End each round with a sl st. Cut yarn and fasten off. Sew on sleeves between markers. Sew side and sleeve seams.

Chart B:

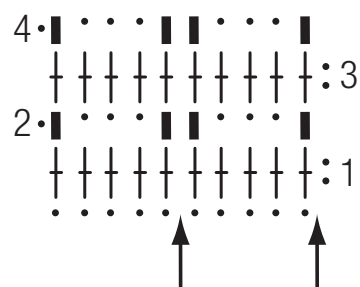


Chart A:

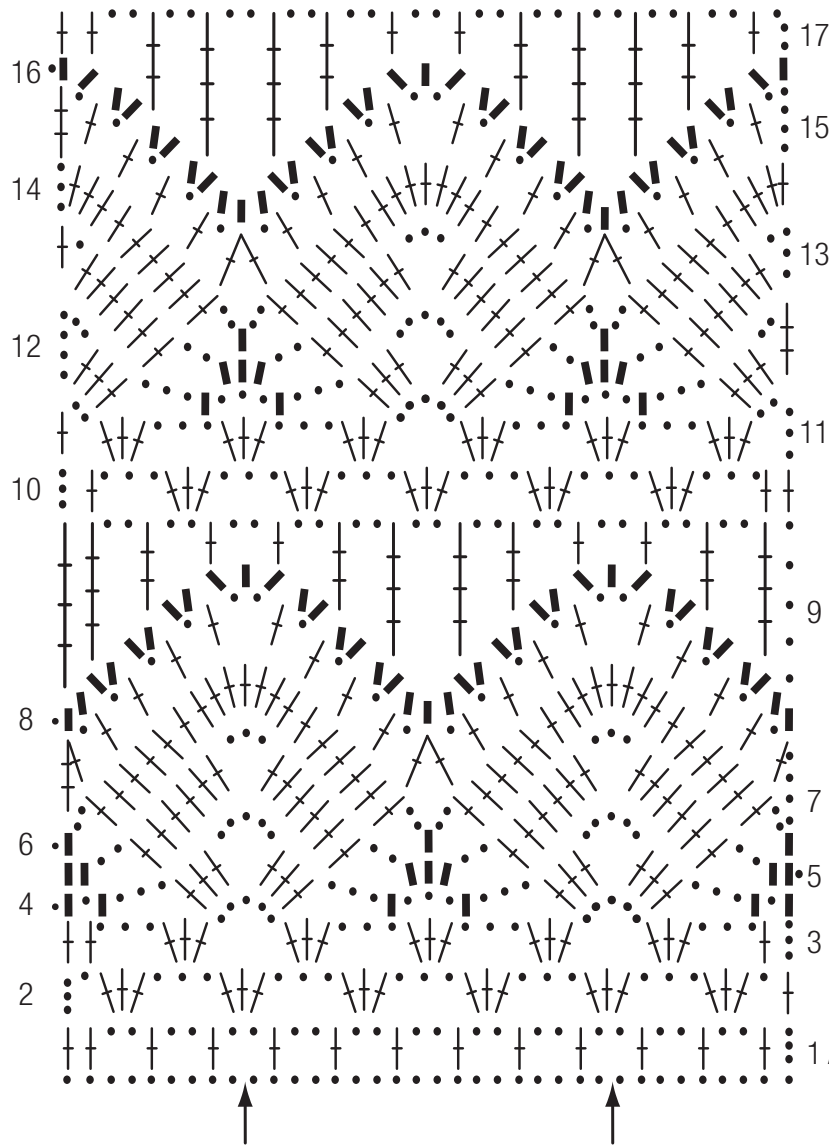


Chart key:

- = ch 1
- = 1 sc
- + = 1 dc
- + = 1 tr
- + = 1 dtr
- △ = dc2tog
- ▽ = dc&tr2tog

