

## MOHAIR SWEATER

**Size 36 – 40 (42 – 46)**

**Finished Bust 41 (44)''**

**Length 26<sup>3</sup>/<sub>4</sub>''**

Instructions are given for first size. Figures in parenthesis refer to larger sizes. When only one figure is given, it applies to all sizes.

**Materials:** Approx. 4 (5) balls (approx. 231yd/210m each) of Lana Grossa **Silkhair** (70% superkid mohair, 30% silk) in violet (col 36); size 6 and 7 [4 and 4.5mm] needles, size 6 [4mm] circular needle, 24'' [60cm] long.

**Rib Pattern:** k1, p1.

**Stockinette stitch:** k on RS; p on WS.

**Stockinette stitch in rounds:** k every round.

**Purl Garter stitch:** p every row.

**Rib/Lace Pattern:** Work according to chart. Numbers at right edge of chart indicate RS rows; on WS rows, work sts as they appear, p all yo's. Begin chart pattern with sts before first arrow, work 2 sts between arrows for pattern repeat, end with sts after 2<sup>nd</sup> arrow. Repeat rows 1-16 throughout.

**Textured Pattern:** multiple of 4 + 2 + 2 selvage sts. Row 1 [RS]: selvage st, \* SK2P [sl1 purlwise, k2tog, pssso], [k1, yo, k1] in next st = 3 sts, repeat from \*, selvage st. Row 2 [WS]: p all sts. Row 3 [RS]: selvage st, \* [k1, yo, k1] in next st = 3 sts, SK2P, repeat from \*, selvage st. Row 4 [WS]: p all sts. Repeat rows 1-4 throughout.

**Gauge:** 19 sts and 25 rows = 4'' [10 cm] in rib/lace pattern on larger needles; 20.5 sts and 20 rows = 4'' [10 cm] in textured pattern on larger needles; 17 sts and 23 rows = 4'' [10 cm] in Stockinette st on larger needles.

**Back:** \* With smaller needles, cast on 101 (109) sts and work in rib/lace pattern according to chart for 4 rows. Change to larger needles and continue in pattern as established until back measures 6'' [15cm] from cast-on, ending with a RS row. Next WS row: work in pattern as established and increase [M1] 9 sts evenly across row – 110 (118) sts. Next, work in textured pattern for 4<sup>3</sup>/<sub>4</sub>'' [12cm], decreasing 9 sts evenly on last WS row of textured pattern – 101 (109) sts. Next, work in rib/lace pattern according to chart for 3<sup>1</sup>/<sub>2</sub>'' [9cm], increasing 9 sts evenly on last WS row of rib/lace pat – 110 (118) sts. Next, work in textured pattern for 3<sup>1</sup>/<sub>2</sub>'' [9cm], decreasing 9 sts evenly on last WS row of



textured pattern – 101 (109) sts. Next, work in rib/lace pattern according to chart for 3<sup>1</sup>/<sub>2</sub>'' [9cm], increasing 9 sts evenly on last WS row of rib/lace pattern – 110 (118) sts. Next, work in textured pattern for 2<sup>3</sup>/<sub>4</sub>'' [7cm], decreasing 18 (20) sts evenly on last WS row of textured pattern – 92 (98) sts \*. Next, work in purl Garter st for 1<sup>1</sup>/<sub>4</sub>'' [3cm], increasing 9 (11) sts evenly on last WS row – 101 (109) sts. Work remainder of back in rib pattern and when back measures 1<sup>1</sup>/<sub>2</sub>'' [1cm] in rib pattern, shape neck: Work to center 23 sts, join another ball of yarn, bind off center 23 sts, work to end. Working both sides at same time, bind off 5 sts at each neck edge twice. When back neck measures 1<sup>1</sup>/<sub>4</sub>'' [3cm] in depth, bind off remaining 29 (33) sts for each shoulder.

**Front:** Work same as for back from \* to \*. Next row: continue in pattern as established same as for back and shape neck: Work to center 13 sts, join another ball of yarn, bind off center 13 sts, work to end. Working both sides at same time, bind off 5 sts at each neck edge once, 4 sts once, 2 sts once and 1 st 4 times. When same length as back to shoulders, bind off remaining 29 (33) sts for each shoulder.

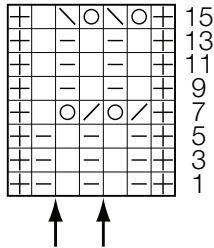
**Sleeves:** With smaller needles, cast on 39 (43) sts and work in rib pattern for 1<sup>1</sup>/<sub>2</sub>'' [4cm]. Change to larger needles, work in Stockinette st and shape sleeve as following: increase 1 st each end of nee-

ple on 7<sup>th</sup> row from rib pattern, then every following 8<sup>th</sup> row 8 times, then every following 6<sup>th</sup> row 3 times – 63 (67) sts. When sleeve measures 16½” [42cm] from rib pattern, bind off all sts loosely.

**Finishing:** Pin pieces to measurements and block

with damp towels. Sew all seams, sewing side seams 19¾ (19¼)” [50 (49) cm] up from lower edge. With circular needle, pick up and knit 90 sts around neck edge. Join for working in rounds and work in Stockinette st for 1¼” [3cm]. Bind off all sts loosely. Sew on sleeves.

**Chart**



**Chart key:**

- ⊕ = selvage st
- = k1
- ▭ = p1
- = yo
- ▧ = k2tog
- ▨ = SKP [sl1 kwise, k1, pss0]

