

TRIANGULAR SHAWL

Approx. 31½" x 98½" [80 x 250 cm]

Materials: Approx. 3 balls (approx. 231yd/210m each) of Lana Grossa **Silkhair** (70% superkid mohair, 30% silk) in taupe (col 35); size 10 [6mm] needles, size 10 [6mm] circular needles, 32" [80cm] and 47" [120 cm] long.

Stockinette st: k on RS; p on WS.

Garter stitch: k every row.

Main Pattern: Work according to chart. Numbers at right edge of chart indicate RS rows; numbers at left edge of chart indicate WS rows. Begin chart pattern with 5 sts. Work yarn over-increases at right and left edge and at center as charted. Keep first and last 2 sts in garter st. Work rows 1-11 once, then repeat rows 10 and 11 throughout, continuing to work yo increases as established.

Scalloped Border:

Row 1 [WS]: k all sts and yo's.

Row 2 [RS]: k2, * yo, k2tog, repeat from * finish row with yo, k2tog, k1.

Row 3 [WS]: k2, yo, k all sts and dropping all yo's, finish row with yo, k2.

Row 4 [RS]: k2, yo, ktbl yo of previous row, [k1, p1] in each following st, end ktbl yo of previous row, yo, k2.

Row 5 [WS]: k2, * yo, k2tog, repeat from *, end yo, k2.

Row 6 [RS]: k2, yo, drop all yo's of previous row, k all other sts, end yo, k2.

Row 7 [WS]: k2, yo, ktbl yo of previous row, [k1, p1] in each following st, end ktbl yo of previous row, yo, k2. Count sts on row 7. You should have a multiple of 7. Increase on next row as necessary.

Row 8 [RS]: k all sts, increase [M1r] sts as necessary to achieve a multiple of 7 sts.

Row 9 [WS]: * k1, k2tog, [(k1, yo) 4 times, k1] all in next st, k2tog, k1, repeat from * to end.

Row 10 [RS]: k all sts.

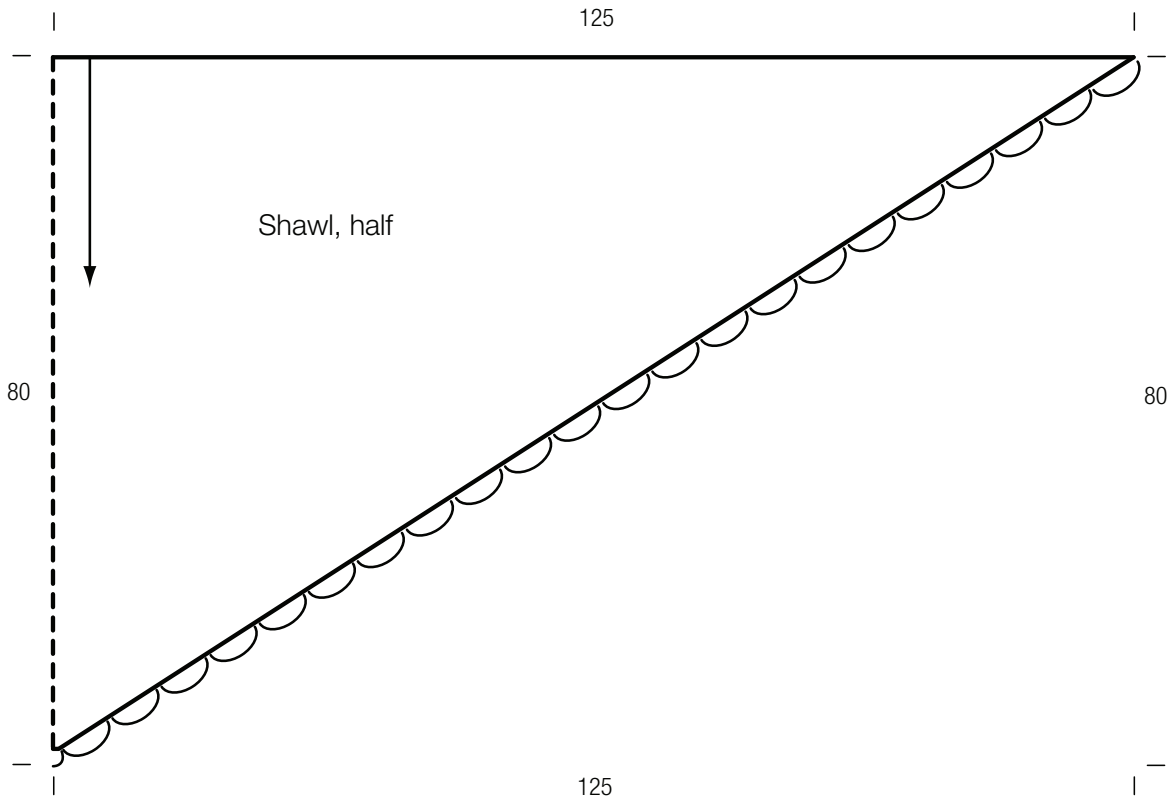
Row 11 [WS]: bind off all sts in knit and at same time, k2tog first 2 and last 2 sts and k3tog between each scallop.

Gauge: 13 sts and 19.5 rows = 4" [10 cm] in Stockinette st.

Shawl: Cast on 5 sts and work in main pattern according to chart. Change to circular needles as stitch count increases. Work in pattern as established for 147 rows and piece measuring 29½" [75cm], measured along center spine. Next, begin with a WS row, work scalloped border over all 299 sts.

Finishing: Pin piece to measurements and block with damp towels.





Chart

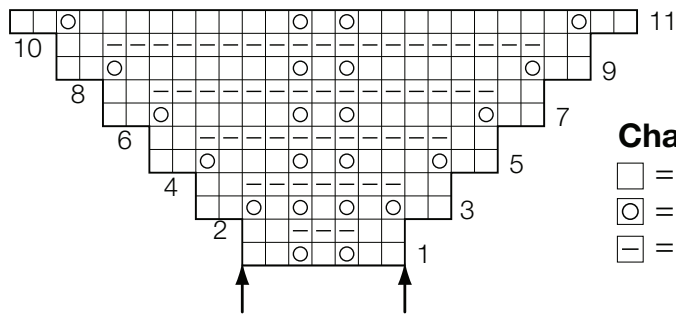


Chart key:

- = k1
- = yo
- ▭ = p1