

FELTED BASKET with cabled edge

Size after felting: Oval bottom approx. 10¼" x 6" [26 x 15 cm], oval top edge approx. 11¾" x 7" [30 x 18 cm], approx. 7¾" [25 cm] high.

Figures on schematic show measurements after felting, figures in parenthesis show measurements before felting.

Materials: Approx. 18 balls (approx. 55yd/50m each) of Lana Grossa **Feltro** (100% wool) in heathered beige (col 24); size 10½ [6.5mm] needles, cable needle [cn]. Shout® Color Catcher® if desired.

Note: Feltro shrinks approx. 30-40% during felting process.

Stockinette stitch: k on RS; p on WS.

Reverse Stockinette stitch: p on RS; k on WS.

Leaf Motif: Work according to chart B. Numbers at right edge of chart indicate RS rows; on WS rows, purl all sts. Begin chart pattern with 1 st, increase 2 sts on rows 3-7 as charted = 7 sts. Decrease on rows 11-15 as charted = 1 st. Work rows 1-16 once.

Leaf Pattern: Work according to chart A. Numbers at right edge of chart indicate RS rows; on WS rows, work sts as they appear or according to chart key. Begin chart pattern with st before first arrow, work 8 sts between arrows for pattern repeat, end with sts after 2nd arrow. Work rows 1-30 once, then repeat rows 3-30 throughout.

Cable Pattern: Work according to chart C. Numbers at right edge of chart indicate RS rows; on WS rows, work sts as they appear. Begin chart pattern with 17 sts. Increase 6 sts on row 3 as charted = 23 sts. Work rows 1-14 once, then repeat rows 7-14 throughout.

Gauge: 12 sts and 16 rows = 4" [10 cm] in Stockinette st before felting; 23 sts = 4" [10 cm] in cable pattern before felting; 13 sts and 17 rows = 4" [10 cm] in leaf pattern before felting.

Note: arrows on schematic show direction of work.

Basket: Worked in 3 pieces. For **bottom**, cast on 30 sts, work in Stockinette st and cast on 4 sts at beginning and end of row 3, then cast on 2 sts



at beginning and end of every other row 3 times, then increase 1 st each end of needle every other row once – 52 sts. Work even in Stockinette st until piece measures 9" [23cm] from cast-on. Continue in St st as established and bind off 1 st at beginning of next 2 rows, 2 sts at beginning of following 6 rows and 4 sts at beginning of following 2 rows. Bind off remaining 30 sts.

Side section [make 2]: Cast on 73 sts. Work 2 rows in reverse Stockinette st, then work in leaf pattern according to chart A, working pattern repeat between arrows 7 times. Continue in pattern as established and increase 1 st each end of needle on 7th row from cast-on, then every following 6th row 8 times more – 91 sts. Work increased sts into leaf pattern. Continue in pattern as established until piece measures 14¼" [36cm] from cast-on. Work 2 rows in reverse Stockinette st, then bind off all sts.

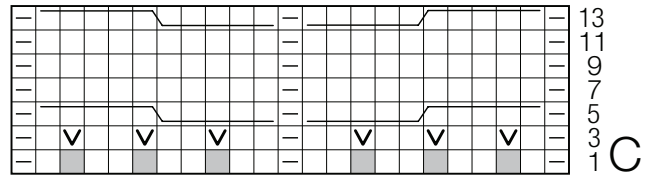
Cabled Edge: Cast on 31 sts and position sts as following: selvage st, work 12 sts in Stockinette st, work 17 sts in cable pattern according to chart C, selvage st – 37 sts after row 3. Work in pattern as established until piece measures approx. 53½" [136 cm] from cast-on. Bind off all sts.

Finishing: Sew side sections together, then sew cast-on edges of side sections to bottom. Sew cast-on and bind-off edges of cabled edge together. Sew cabled edge to top edge of basket, then fold Stockinette st part to WS and sew down. Carefully weave in all ends.

Felting: place bag, Shout® Color Catcher® and a couple of old towels into washing machine. Set your washing machine on the lowest water setting,

the highest temperature and the longest agitation possible. Turn on the machine and let it fill with water. Add small amount of detergent if desired. Shape felted basket by stuffing it with crumpled paper and let dry.

Chart C:



Basket bottom,
half

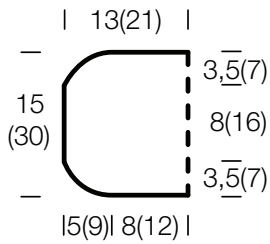


Chart B:

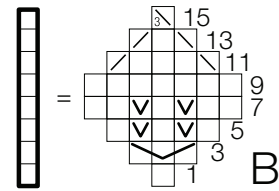


Chart A:

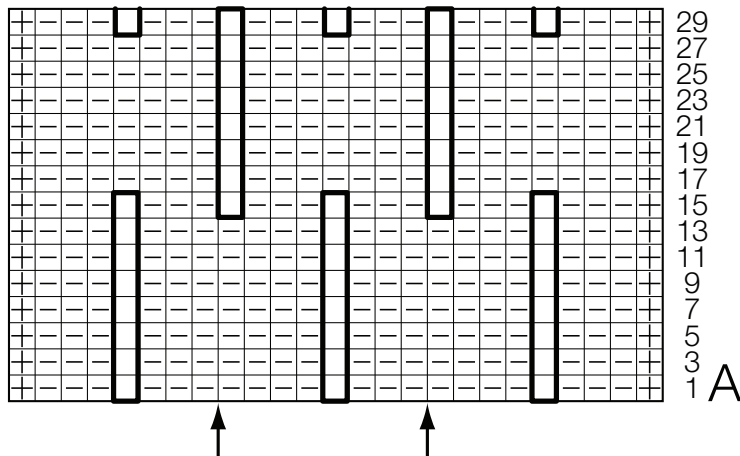



Chart key:

- ⊕ = selvage st
- = k1
- ▬ = p1
- ▧ = k2tog
- ▨ = SKP [sl1 kwise, k1, pss0]
- ▩ = SK2P [sl1 kwise, k2tog, pss0]
- ∇ = M1r
- = blank squares on charts represent "no stitch" and are included to keep st count correct

 = [k1, k1tbl, k1] all in same st

 = sl5 to cn and hold in front of work, k5, k5 from cn

 = sl5 to cn and hold in back of work, k5, k5 from cn

 = place holder for leaf motif from chart B; worked over 1 st and 16 rows and counts as 1 st on chart only