

## BLANKET in Lace Pattern

Approx. 63" x 48¾" [160 x 124 cm]

**Materials:** Approx. 16 balls (approx. 275yd/250m each) of Lana Grossa Lace Silky (70% Pima cotton, 20% silk, 10% polyamide) in purple (col 4); size E/4 [3.5mm] crochet hook.

**Square Motif, approx. 7" [18cm]:** Work according to chart A over 16 rounds. Ch 8, slip st in first ch to join. Numbers on chart indicate rounds. **Round 1:** ch 2 (count as 1 sc), then work sc and ch arches into ring as shown on chart. End round 1 with 1 tr, end rounds 2-15 with 1 dc, end round 16 with a slip st. Work sc and dc into ch arches of previous round. Chart shows first 5 round in their entirety. Sts between arrows at edge of chart = ¼ motif. Curved arrow on top of chart shows direction of work. After having worked through chart round 16, work 1 round sc, working 2 sc between center 2 sts at each corner. Fasten off.

**Lace Border:** Work back and forth in rows according to chart B. Join yarn with a slip st at one corner and work each side edge separately. Numbers at right and left edge of chart indicate rows. Begin each row with number of turning chs shown on chart. Begin chart pattern with sts before first arrow, work sts between arrows for pattern repeat, end with sts after 2<sup>nd</sup> arrow. Work sc on rows 3 and 5 and dc on row 7 into ch-1 sp of previous row. Work rows 1-8 once.

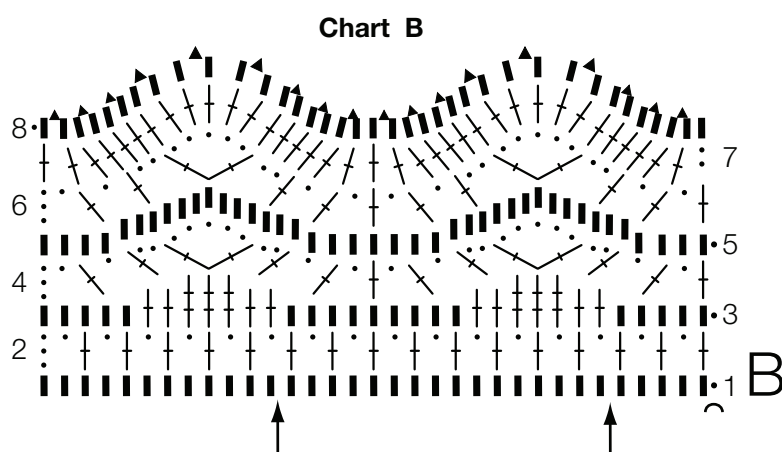
**Note:** Pointy edge is formed by the pattern.

**Gauge:** 1 motif = 7" [18cm]; 8 rows of lace border = 3¼" [8cm].



**Blanket:** Make 48 motifs. Arrange motifs according to schematic. With RS facing, join motifs with slip st. Work 5 rows of 273 sc each along short edges of blanket, then work lace border according to chart B = 17 points. Next, work 5 rows of 401 sc along long edges (inclusive short edges of lace border), then work lace border = 25 points. Next, work 1 row picots (see row 8 of chart B) along short edges of lace border (see arrow a on schematic).

**Finishing:** Carefully weave in all ends. With WS facing, cover piece with damp towels and carefully steam block.



### Chart key:

- = 1 ch
- ∩ = 1 sl st
- = 1 sc
- † = 1 dc
- † = 1 tr
- † = 1 picot of [ch 3, 1 sc in first ch]
- ∩ = dc2tog in same st and ch 5 between sts

