



Crocheted Lantern Cozy

Approx. 22" [56cm] circumference, 4¾" [12cm] high

Materials: Approx. 2 balls (approx. 99yd/90m each) of Lana Grossa **Organico** (100% organic cotton) in grège (col 5) and approx. 1 ball (approx. 99yd/90m) of Lana Grossa **Festa** (76% cotton, 16% polyamide, 8% lurex) in light beige/silver (col 18); size L/11 [8mm] crochet hook. Cozy fits vase 'Citron' by IKEA.

Note: Work with 2 strands of Organico and 1 strand of Festa held together throughout – 3 strands.

Basket Weave Pattern: Multiple of 6. Work in rounds according to chart. Numbers at right edge of chart indicate rounds. Begin each round with ch 2 (count as 1 or as ½ post st). Join each round with a slip st. Begin chart pattern with sts before first arrow, work 6-st pattern repeat between arrows 7 times. Work rounds 1-9 once.

Gauge: 9 sts and 7.5 rounds = 4" [10 cm] in basket weave pattern with 3 strands of yarn held together.

Cozy: With 2 strands of Organico and 1 strand of Festa held together, ch 48 and join in the round with a slip st. Work in basket weave pattern according to chart for 9 rounds and piece measuring 4¾" [12cm] = 8 pattern repeats per round. Fasten off and carefully weave in ends.

Crochet Chart

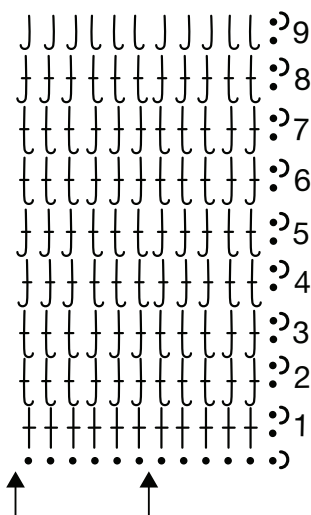


Chart key:

- = 1 ch
- ∩ = 1 sl st
- † = 1 dc
- J = ½ dc/rf: yo hook, insert hook from in front and from right to left around stem of st in row below
- l = ½ dc/rb: yo hook, insert hook from behind and from right to left around stem of st in row below
- ‡ = 1 dc/rf: yo hook, insert hook from in front and from right to left around stem of st in row below
- ‡ = 1 dc/rb: yo hook, insert hook from behind and from right to left around stem of st in row below



Cabled Lantern Cozy

Approx. 22" [56cm] circumference, 4¾" [12cm] high

Materials: Approx. 2 balls each (approx. 44yd/40m each) of Lana Grossa **Vivo** (100% cotton) in grège (col 8), size 13 [9mm] needles, cable needle [cn]. Cozy fits vase 'Citron' by IKEA.

Slip Garter Selvage: Slip first stitch of every row knitwise and knit last stitch of every row.

Cable Pattern: Work over 16 sts according to chart. Numbers at right edge of chart indicate RS rows; on WS rows, work sts as they appear. Repeat rows 1-12 throughout.

Gauge: 16 sts and 13 rows = 4¾" x 4" [12 x 10 cm] in cable pattern.

Cozy: Worked side to side. Cast on 16 sts. P next WS row, then work in cable pattern according to chart until piece measures 22" [56 cm] from cast-on. Work slip garter selvage st throughout. Join piece by grafting live sts to cast-on sts. Carefully weave in ends.

Chart

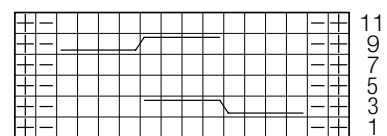


Chart key:

- ⊞ = selvage st
- = k1
- ◻ = p1
- ◻◻◻◻ = sl4 to cn and hold in front of work, k4, k4 from cn
- ◻◻◻◻ = sl4 to cn and hold in back of work, k4, k4 from cn