

GLASS LANTERN COZIES

8¼" [21cm] in circumference and 6.5cm in height

Materials: Approx. 1 ball each (approx. 148yd /135m each) of Lana Grossa Lampone (70% cotton, 30% polyamide) in light grey (col 10), dark grey (col 11) and beige (col 9); one set size 8 [5mm] double-pointed needles [dpns], cable needle [cn].

Rib Pattern: k2, p2.

Lace/Rib Pattern: Work according to chart A. Numbers at right edge of chart indicate rounds. Work 4-st pattern repeat between arrows around. Repeat rounds 1-4 throughout.

Cable/Lace Pattern: Work according to chart B. Numbers at right edge of chart indicate rounds. Work 12-st pattern repeat between arrows around. Work rounds 1-17 once, then repeat rounds 2-17 throughout.

Mesh Pattern: Round 1: p.

Round 2: * k1, k1b [insert RH needle through center of st in row below and knit a new st; drop original st from left hand needle], repeat from * around.

Rnd 3: p.

Rnd 4: * k1b, k1, repeat from * around.

Repeat rounds 1-4 throughout.

Gauge: 18 sts and 26 rounds = 4" [10 cm] in cable/lace pattern; 16 sts and 28 rounds = 4" [10 cm] in lace/rib pattern; 15 sts and 22 rounds = 4" x 2½" [10 x 5 cm] in mesh pattern.

Cozy A: Worked from the top down. With Lampone in light grey and dpns, cast on 32 sts. Arrange sts evenly on 4 needles – 8 sts per needle. Join for working in rounds and work in lace/rib pattern according to chart A for 1¾" [4.5cm]. Next, work in rib pattern as following: continue to purl the p sts and knit the lace sts [st 2 and 3 of chart]. When piece measures ¾" [2 cm] in rib pattern, bind off all sts in pattern with 2 strands of yarn held together.

Cozy B: Worked from the top down. With Lampone in beige and dpns, cast on 36 sts. Arrange sts evenly on 4 needles – 12 sts per needle. Join for working in rounds and work in cable/lace pattern according to chart B for 2½" [6.5cm]. Bind off all sts in pattern with 2 strands of yarn held together.



Cozy C: Worked from the top down. With Lampone in dark grey and dpns, cast on 32 sts. Arrange sts evenly on 4 needles – 8 sts per needle. Join for working in rounds and work in mesh pattern for 2½" [6.5cm]. Bind off all sts in pattern with 2 strands of yarn held together.

FLOWER VASE COZIES

9½" [24cm] in circumference and 6" [15cm] in height.

Materials: For each cozy: approx. 1 ball (approx. 115yd/105m each) of Lana Grossa **Elastico Big** (96% cotton, 4% polyester Elité) in light grey (col 4); one set size 4 [3.5mm] double-pointed needles [dpns].

Rib, Lace/Rib and Cable/Lace Patterns: Same as for lantern cozies.

Gauge: 24 sts and 28 rounds = 4" [10 cm] in cable/lace pattern; 21 sts and 28 rounds = 4" [10 cm] in lace/rib pattern.

Cozy A: With dpns, cast on 48 sts. Arrange sts evenly on 4 needles – 12 sts per needle. Join for working in rounds and work in cable/lace pattern according to chart B for 6" [15cm]. Bind off all sts in pattern.

Cozy B: With dpns, cast on 40 sts. Arrange sts evenly on 4 needles – 10 sts per needle. Join for working in rounds and work in lace/rib pattern according to chart A for 5” [13cm]. Next, work in rib

pattern as following: continue to purl the p sts and knit the lace sts [st 2 and 3 of chart]. When piece measures ¾” [2 cm] in rib pattern, bind off all sts in pattern.

Charts A and B:

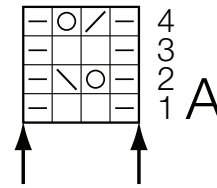
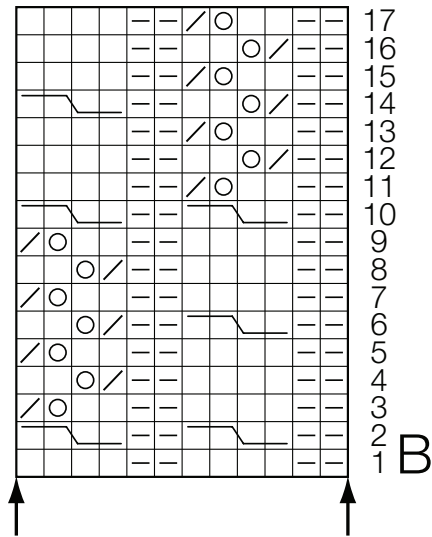


Chart key:

- = k1
- ▬ = p1
- = yo
- ▧ = k2tog
- ▨ = SKP [sl1 kwise, k1, pss0]

▭ = sl2 to cn and hold in front of work, k2, k2 from cn