

FELTED BOWL WITH LID

Size after felting: approx. 6" [15cm] in diameter and 3¼" [8cm] high.

Materials: Approx. 3 balls (approx. 55yd/50m each) of Lana Grossa Feltro Color (100% wool) in orange/khaki/black (col 515); size L/11 [8mm] crochet hook. Shout® Color Catcher® if desired. Narrow leather band, one 2" [50mm] long toggle in dark brown [by Union Knopf, item 35579].

Note: Feltro shrinks approx. 30-40% during felting process.

Single Crochet [sc]: Worked in rounds. Ch 10, slip st in first ch to form a ring. Round 1: 10 sc into ring. Begin each round with ch 1, join each round with a slip st.

To increase: work 2 sc into one stitch.

Gauge: 10 sc and 11 rounds = 4" [10 cm] before felting.

Bowl: ch 10, slip st in first ch to form a ring. Place round marker at beginning of round. Round 1: 10 sc into ring. Round 2: 2 sc into each st of previous round – 20 sts. Rnd 3: work 20 sc around. Round 4: 2 sc into each st of previous round – 40 sts. Rounds 5-14: work sc around. Fasten off and carefully weave in end.

Lid: Work same as for bowl through round 5. Round 6: work sc around, working 2 sc into every 4th st of previous round – 50 sts. Rounds 7-14: work sc around. Fasten off and carefully weave in end.

Felting: Place bowl, lid, Shout® Color Catcher® and a couple of old towels into washing machine. Set your washing machine on the lowest water setting, the highest temperature and the longest agitation possible. Turn on the machine and let it fill with water. Add small amount of detergent if desired.

After felting, when work still whet, shape bowl by stuffing it with lots of crumpled paper and let it dry. Use leather band to attach toggle to top of lid.



BOWL

with Duplicate Stitch Embroidery

Size after felting: approx. 15" [38cm] in diameter and 6¾" [17cm] high.

Materials: Approx. 7 balls (approx. 55yd/50m each) of Lana Grossa Feltro (100% wool) in black (col 6), approx. 5 balls in dark brown (col 23) and approx. 1 ball in petrol blue (col 40); size L/11 [8mm] crochet hook. Shout® Color Catcher® if desired, spray starch.

Note: Feltro shrinks approx. 30-40% during felting process.

Single Crochet [sc]: Worked in rounds. Ch 4, slip st in first ch to form a ring. Round 1: 6 sc into ring. Begin each round with ch 1, join each round with a slip st. To increase: work 2 sc into one st.

Embroidery: Worked in duplicate st according to chart after piece has been crocheted. Numbers at right edge of chart indicate rounds worked. 1 duplicate st covers 1 sc and 1 round. Since sc sts are slightly offset from round to round, the embroidery will shift slightly. It is therefore important to work duplicate sts at equal distance from each other. Work 12-st pattern repeat between arrows throughout. Chart shows 2 pattern repeats.

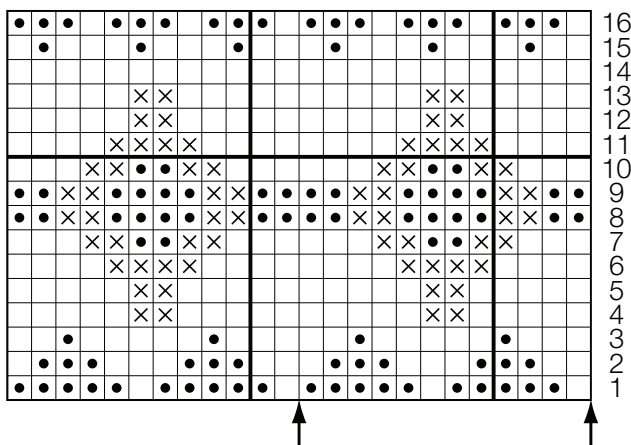
Gauge: 9 sc and 10 rounds = 4" [10 cm] before felting.

CROCHETED BOWL

Bowl: With black, ch 4, slip st in first ch to form a ring. Place round marker at beginning of round. Round 1: 6 sc into ring. Round 2: 2 sc into each st of previous round (=12 sts). Round 3: work sc around, working 2 sc into every other st (=18 sts). Round 4: work sc around, working 2 sc into every 3rd st – 24 sts. Round 5: work sc around, working 2 sc into every 4th st – 30 sts. Round 6: work sc around, working 2 sc into every 5th st – 36 sts. Continue in this manner through round 20 (= 120 sts). Rounds 21-25: Work sc around. Change to dark brown and work 16 rounds in sc. Change to black and work 10 rounds in sc. Work 1 round in sl st, then fasten off. Work duplicate st embroidery according to chart over dark brown portion of bow = 10 pattern repeats around. Fold top 7 rounds = 6 sc rounds + 1 slip st round to inside of bowl and sew down. Carefully weave in all ends.

Felting: Place bowl, Shout® Color Catcher® and a couple of old towels into washing machine. Set your washing machine on the lowest water setting, the highest temperature and the longest agitation possible. Turn on the machine and let it fill with water. Add small amount of detergent if desired. After felting, when work still whet, shape bowl by stuffing it with lots of crumpled paper. Spray liberally with spray starch and let dry.

Chart



Color key:

- = 1 sc in dark brown = crocheted fabric
- = 1 duplicate st with black
- ⊗ = 1 duplicate st with petrol blue

Size approx. 12½" [32cm] in diameter and 3½" [9cm] high.

Materials: Approx. 6 balls (approx. 44yd/40m each) of Lana Grossa Vivo (100% cotton) in black (col 6); size N/15 [10mm] crochet hook.

Single Crochet [sc]: ch 2, 6 sc in 2nd ch from hook, then work 1 sc into every sc of previous round. To increase: work 2 sc into one st.

Main Pattern: Worked in rounds, working under back loop only. Insert hook in back loop of next st from front to back, then into back loop of following st from back to front. Yo hook and draw yarn through crossed loops on hook. Yo hook and draw through both loops on hook. * Insert hook in back loop of last st worked [= st where you last inserted the hook from back to front] from front to back, then into back loop foll st from back to front and complete as before. Repeat from * throughout.

Gauge: 8 sc and 7 rounds = 4" [10 cm]; 11 sts and 7.5 rounds = 4" [10 cm] in main pattern.

Bowl: ch 2, 6 sc in 2nd ch from hook. Work sc in rounds. Place round marker at beginning of round. Round 1: 6 sc into ring. Round 2: 2 sc in every sc of previous round (=12 sc). Round 3: work sc around, work 2 sc in every other st – 18 sts. Round 4: work sc around, work 2 sc in every 3rd st (=24 sts). Round 5: work sc around, work 2 sc in 2nd st and every 4th st 5 times (=30 sts). Round 6: work sc around, work 2 sc in every 5th st (=36 sts). Round 7: work sc around, work 2 sc in every 6th st (= 42 sts). Round 8: work sc around, work 2 sc in every 7th st (=48 sts). Round 9: work sc around, work 2 sc in 4th st and every 8th st 5 times (=54 sts). Round 10: work sc around, work 2 sc in every 9th st (=60 sts). Round 11: work sc around, work 2 sc in every 10th st (=66 sts). Round 12: work sc around, work 2 sc in 5th st and every 8th st 7 times (=74 sc). Next, work in main pattern without increases for 7" [18cm]. Work 1 round slip st, then fasten off and carefully weave in ends. Push base of bowl up and fold side edge in half to outside as shown in photo.